



Metalphoto of Cincinnati

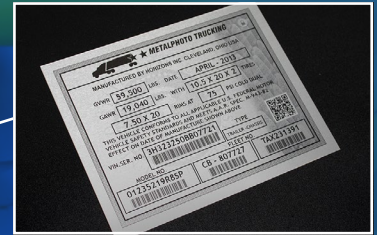
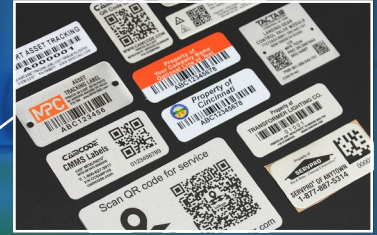
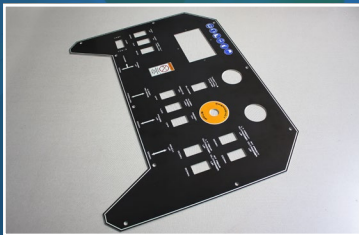


# Metalphoto of Cincinnati Knows Product Identification

Metalphoto of Cincinnati has the capability to offer customized solutions for every aspect of user interaction with your equipment, and the experience to help you select the best options for your application. MPC offers products to satisfy all your equipment identification, interface, tracking and branding needs, including:

- ▶ Control Panels
- ▶ Fixed and Variable Information Nameplates & Data Plates
- ▶ Metal and Plastic Graphic Overlays
- ▶ Warning and Operational Signage
- ▶ Architectural and Wayfinding Signage
- ▶ QR Code and Barcode Asset Labels
- ▶ Asset Label Kits
- ▶ Anti-Counterfeit & Security Labels
- ▶ Urethane Domed Labels
- ▶ Transportation Identification Labels & Tracking Plates
- ▶ Label Blanks For On-Site Marking

VER. 1.1.1





## Nameplates & Data Plates

- ▶ Uniquely durable options for harsh and outdoor environments; expected exterior life of Metalphoto is 20+ years
- ▶ Custom fabricated to your specifications
- ▶ Available with bar codes, QR codes, watermarks, or other security and anti-counterfeit graphic elements

<b>Materials</b>	Metalphoto®, UltraColor™, anodized aluminum, aluminum, stainless steel, brass, polyester, polycarbonate
<b>Attachment Options</b>	Permanent pressure-sensitive adhesive and/or holes for mechanical attachment
<b>Graphics &amp; Images</b>	Many fonts and design elements available, including your company logo and item unique bar codes/QR codes
<b>Color Options</b>	Black graphics on silver background or silver graphics on black background; color options available*
<b>Size Options</b>	Standard and custom sizes available up to 24" x 48"



## Control Panels

- ▶ Custom fabricated to your specifications
- ▶ Back panels available to provide rigidity to electronic switches and controls
- ▶ Uniquely durable options for harsh and outdoor environments; expected exterior life of Metalphoto is 20+ years

<b>Materials</b>	Metalphoto®, UltraColor™, anodized aluminum, aluminum, stainless steel, brass, polyester, polycarbonate
<b>Fabrication</b>	Advanced tooling for precision fabrication capabilities including milling, countersink and counterbore holes, bending/forming, stud insertion, stand-offs, permanent pressure-sensitive adhesives, and more
<b>Graphics &amp; Images</b>	Many fonts and design elements available, including your company logo and item unique bar codes/QR codes
<b>Color Options</b>	Black graphics on silver background or silver graphics on black background; color options available*
<b>Size Options</b>	Standard and custom sizes available up to 24" x 40"



## Signs

- ▶ Custom designed and constructed to meet your project specifications
- ▶ Many aesthetic and function options available
- ▶ Metalphoto offers exceptional resistance to extreme temperatures and aging, also has excellent resistant to chemicals and moisture

<b>Materials</b>	Metalphoto®, UltraColor™, anodized aluminum, aluminum, stainless steel, brass, polycarbonate, vinyl, flexible magnetic
<b>Attachment</b>	Permanent pressure-sensitive adhesive and/or holes for mechanical attachment; also stakes, extensions, screws and ties for outdoor signage systems
<b>Graphics &amp; Images</b>	Many fonts and design elements available, including your company logo and item unique bar codes/QR codes
<b>Color Options</b>	Black graphics on silver background or silver graphics on black background; color options available*
<b>Size Options</b>	Standard and custom sizes available up to 24" x 40"

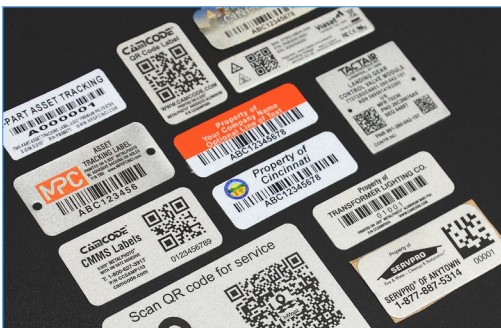
\*Colors on some metal and plastic materials have limited UV resistance, and are not recommended for long-term outdoor use.



## Identification & Branding Labels

- ▶ A wide array of adhesives and mechanical attachment options available to ensure your labels stay attached for the life of your asset
- ▶ High resolution black and white or full color options
- ▶ Uniquely durable options for harsh and outdoor environments; expected exterior life of Metalphoto is 20+ years

<b>Materials</b>	Metalphoto®, anodized aluminum, aluminum, stainless steel, brass, polyester, polycarbonate, vinyl, domed urethane, flexible magnetic
<b>Attachment Options</b>	Permanent pressure-sensitive adhesive and/or holes for mechanical attachment
<b>Graphics &amp; Images</b>	Many fonts and design elements available, including your company logo and item unique bar codes/QR codes
<b>Color Options</b>	Silver and black graphics; color options available, including full CMYK color*
<b>Size Options</b>	Almost any custom size available



## Bar Code & QR Code Asset Tracking Labels

- ▶ Feature barcodes and QR codes for tracking and linking to information
- ▶ Uniquely durable options for harsh and outdoor environments; expected exterior life of Metalphoto is 20+ years
- ▶ Metal options with tamper evident, watermark and security print options, similar to those found in ID cards and currency

<b>Materials</b>	Metalphoto®, anodized aluminum, aluminum, stainless steel, brass, polyester, polycarbonate, vinyl, domed urethane, flexible magnetic
<b>Attachment Options</b>	Permanent pressure-sensitive adhesive and/or holes for mechanical attachment
<b>Graphics &amp; Images</b>	Many information types and design elements available, including your company logo, serialized ID numbers and item unique bar codes/QR codes
<b>Color Options</b>	Black graphics on silver background or silver graphics on black background; color options available, including full color*
<b>Size Options</b>	Almost any custom size available

\*Colors on metal materials have limited UV resistance. Not recommended for long-term outdoor use.



## Graphic Overlays

- ▶ Custom fabricated to your specifications
- ▶ Full color options and special printing effects available on both metal and plastic
- ▶ Uniquely durable options for harsh and outdoor environments; expected exterior life of Metalphoto is 20+ years

<b>Materials</b>	Metalphoto®, anodized aluminum, polyester, polycarbonate, vinyl
<b>Fabrication</b>	Advanced tooling for precision fabrication capabilities, as well as advanced digital die-cutting that avoids costly tooling charges.
<b>Graphics &amp; Images</b>	Many fonts and design elements available, including your company logo and item unique bar codes/QR codes
<b>Display Options</b>	Screen and digital printing for many color options, including full color*, LCD/LED display windows, button or overlay embossing
<b>Finishes</b>	Gloss, satin, velvet, matte

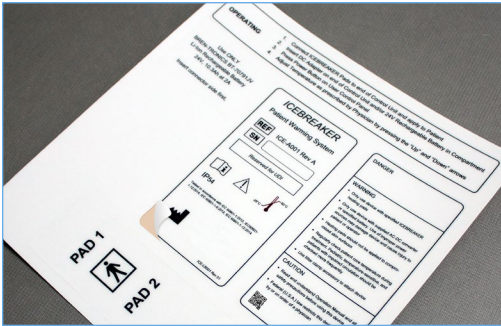
\*Colors on some metal and plastic materials have limited UV resistance, and are not recommended for long-term outdoor use.



## Warning & Instruction Labels

- ▶ Customizable size, shape, thickness and information
- ▶ A wide array of adhesives and mechanical attachment options available to ensure your labels stay attached for the life of your asset
- ▶ Uniquely durable options for harsh and outdoor environments; expected exterior life of Metalphoto is 20+ years

<b>Materials</b>	Metalphoto®, anodized aluminum, aluminum, stainless steel, brass, polyester, polycarbonate, vinyl, domed urethane, flexible magnetic
<b>Attachment Options</b>	Permanent pressure-sensitive adhesive and/or holes for mechanical attachment
<b>Graphics &amp; Images</b>	Many fonts and design elements available, including your company logo and item unique bar codes/QR codes
<b>Color Options</b>	Black graphics on silver background or silver graphics on black background; color options available, including full color*
<b>Size Options</b>	Almost any custom size available



## Label Kits

- ▶ Customizable size, shape, material, thickness and information
- ▶ Label sheets that include complete label sets for each equipment piece
- ▶ Saves time and reduces labeling costs

<b>Materials</b>	Metalphoto® foil, anodized aluminum, aluminum, stainless steel, brass, polyester, polycarbonate, vinyl, domed urethane, flexible magnetic
<b>Attachment Options</b>	Permanent pressure-sensitive adhesive and/or holes for mechanical attachment
<b>Graphics &amp; Images</b>	Many fonts and design elements available, including your company logo and item unique bar codes/QR codes
<b>Color Options</b>	Black graphics on silver background or silver graphics on black background; color options available, including full color*
<b>Size Options</b>	Almost any custom size available



## Label Blanks

- ▶ Blank labels for on-site marking via laser, engraving or stamping
- ▶ Customizable size, shape, material and thickness
- ▶ Uniquely durable options for harsh and outdoor environments

<b>Materials</b>	AlumaMark BlackPLUS®, DuraBlack®, anodized aluminum, AlumaMark®
<b>Attachment Options</b>	Permanent pressure-sensitive adhesive and/or holes for mechanical attachment
<b>Graphics &amp; Images</b>	None, labels are blank for on-site marking
<b>Color Options</b>	Silver or black; color options available*
<b>Size Options</b>	Almost any custom size available

\*Colors on some metal and plastic materials have limited UV resistance, and are not recommended for long-term outdoor use.



## Membrane Switches

- ▶ Custom designed and constructed to meet your project specifications
- ▶ Sealed construction is resistant to moisture and contaminants and is easily cleaned
- ▶ Low cost, especially when compared to bulky, costly electromechanical switch assemblies

<b>Circuit Materials</b>	Silver flex, copper flex or PCB circuits
<b>Tail Connector Options</b>	Nicomatic CrimpFlex, Amphenol FCI Clincher, ZIF Contacts, solder tabs, and male or female connector pins available
<b>Available Features</b>	Graphic overlay, tactile and non-tactile buttons, elastomer keypads, button or overlay embossing, backlighting options including L.G.F., EL, fiber optic, embedded LEDs, rigid back panels, ESD/EMI/RFI shielding, IP65 rating
<b>Overlay Color Options</b>	Screen and digital printing for many color options*
<b>Size Options</b>	Almost any custom size available



## Integrated Assemblies

- ▶ Custom designed and constructed to meet your project specifications
- ▶ Full featured, complete turn-key input device
- ▶ Plug-in user-interface saves time and reduces assembly costs

<b>Tail Connector Options</b>	Berg/FCI and CrimpFlex standard; Molex, Amp, ZIF, solder tabs, and male or female connector pins available
<b>Available Features</b>	Membrane switch keypads; silicone rubber keypads; printed circuit board controller electronics – rigid (PCB) and flexible (FPC); rigid support back panels (aluminum, stainless steel, acrylic, fr4, etc.) With PEM mounting hardware; bezels, enclosures & housings; backlighting options (EL, fiber optic and L.G.F.); integrated touchscreens
<b>Color Options</b>	Screen and digital printing for many color options*
<b>Size Options</b>	Almost any custom size available



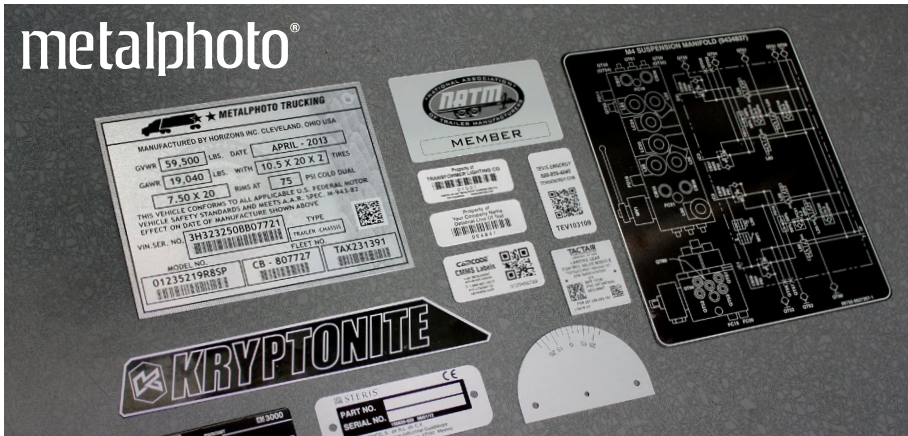
## Rubber Keypads

- ▶ Custom designed and constructed to meet your project specifications
- ▶ Many aesthetic and function options available
- ▶ Exceptional resistance to extreme temperatures and aging, also has excellent resistant to chemicals and moisture

<b>Materials</b>	Silicone rubber
<b>Feedback Options</b>	Various tactile actuation forces available
<b>Fabrication</b>	Epoxy and polyurethane (PU) coating, screen printing, and laser etching options available
<b>Additional Options</b>	Printed circuit board, bezel with or without additional graphics, backlighting components such as fiber optic lamp or LEDs, touch screen or LCD display, rigid support back panels (aluminum, stainless steel, acrylic, FR4, etc.) with PEM mounting hardware, enclosure or molded housing/case
<b>Color Options</b>	Many color options available

\*Colors on some metal and plastic materials have limited UV resistance, and are not recommended for long-term outdoor use.

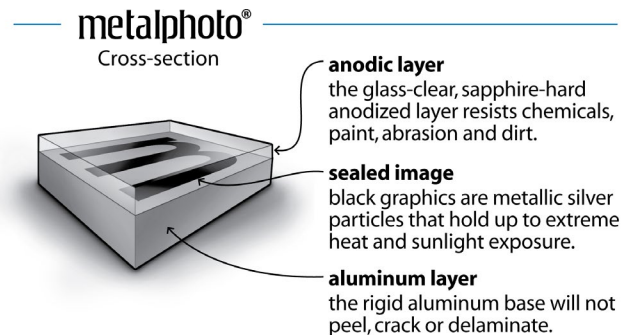
metalphoto®



Horizons Incorporated

## About Metalphoto®

Our identification products feature durability superior to other options because they are created using our proprietary Metalphoto substrate. Metalphoto is photosensitive anodized aluminum which features a photographic image that is embedded within the sapphire-hard anodic layer of the aluminum. This combination gives a Metalphoto part an outdoor life of over 20 years and makes it resistant to damage or degradation from the harsh conditions and environmental factors industrial equipment encounters. The National Association of Graphic and Product Identification Manufacturers (GPI) Industry Standards and Practices Manual identifies Metalphoto photosensitive anodized aluminum as the most durable printed aluminum substrate available, and it has been trusted by industry, government, and military organizations for over 50 years. To learn more about Metalphoto, visit [metalphoto.com](http://metalphoto.com).



## Metalphoto of Cincinnati: A Division of Horizons Incorporated

Metalphoto of Cincinnati has been a leading full-service manufacturer of durable custom nameplates, panels, overlays, labels and signs for more than 50 years. Our experience is our strength, providing the knowledge and capability to deliver the best solution for your product identification needs.

MPC's high customer satisfaction levels and re-order rates are a direct reflection of our employee's efforts. From the dedicated graphics, engineering and customer service teams, to the experienced machine and die operators in our manufacturing plant, each of our associates is committed to providing the high quality products and service that consistently delight our customers.

As a manufacturer of custom identification items, equipment front panels and overlays, MPC offers design support at every turn. Whether you simply need your drawing refined, or have a concept but need assistance with the development of your product, MPC's team includes graphic designers as well as industrial and manufacturing engineers, who will guide you through each step of taking your product from design, and through the manufacturing process that is the most cost-effective for you, the customer.

### LOCATED AT

1080 Skillman Drive,  
Cincinnati, OH 45215  
USA

### CONTACT US AT

t: 800-528-4058  
f: 513-772-8306

### FIND US AT

[www.mpofcinci.com](http://www.mpofcinci.com)  
[www.pannam.com](http://www.pannam.com)  
[www.camcode.com](http://www.camcode.com)



*Horizons Incorporated does not warrant performance of its materials in any environment. Materials must be tested in specific anticipated operating environment.*